

CULVER SCHOOL DISTRICT

Phase II

Elementary School Addition and Renovations

Elementary School Addition



NORTH ELEVATION 11.20.14
10' x 10'



WEST ELEVATION 11.20.14
10' x 10'



SOUTH ELEVATION 11.20.14
10' x 10'

Elementary
School Addition

BBT
ARCHITECTS

Courtyard View



EAST ELEVATION 11.20.14
DWG 104



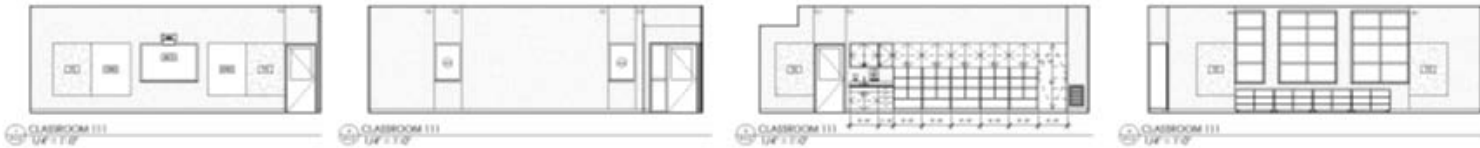
3D VIEW SOUTH ENTRY

ES Floor Plan



Elementary
School Addition

Interior Elevations



Elementary
School Addition

BBT
ARCHITECTS

CS CONSTRUCTION



cs | construction

CONSTRUCTION BUDGET FOR:

PROJECT: CULVER ELEMENTARY SCHOOL ADDITION
OWNER: CULVER SCHOOL DISTRICT
DATE: 2/6/2015

PHASE II - GMP ESTIMATE SUMMARY

DESCRIPTION	AMOUNT	\$ / SF
GENERAL CONDITIONS	\$198,312	\$9.96
DEMOLITION / SITEWORK / SITE IMPROVEMENTS	\$182,025	\$9.12
CONCRETE FOUNDATIONS / SLABS / REINFORCING	\$196,660	\$9.66
MASONRY	\$94,415	\$4.75
STRUCTURAL STEEL / ARCHITECTURAL STEEL	\$35,023	\$1.75
CARPENTRY - FRAMING/CABINetry/Finish Work	\$877,895	\$43.99
INSULATION / CAULKING / WATERPROOFING / FLASHING	\$284,045	\$14.23
DOORS & WINDOWS	\$188,997	\$9.47
FINISHES - DRYWALL, ACOUSTIC CEILING, FLOORING, PAINTING	\$301,625	\$15.11
SPECIALTIES - ACCESSORIES, FIRE EXTINGUISHERS, MISC.	\$66,067	\$3.31
EQUIPMENT - SPECIAL ITEMS	\$3,360	\$0.17
WINDOW COVERINGS, FURNISHINGS	\$7,500	\$0.38
MECHANICAL - PLUMBING, FIRE SPRINKLERS, HVAC	\$837,429	\$41.96
ELECTRICAL	\$332,538	\$16.66
LOW VOLTAGE	\$152,672	\$7.65
SUBTOTAL COSTS	\$3,758,563	\$189.99
GENERAL LIABILITY INSURANCE - 1.12%	\$42,096	\$2.11
OVERHEAD AND FEES - 3%	\$114,020	\$5.71
DESIGN CONTINGENCY - 2.5%	\$93,964	\$4.71
CONSTRUCTION CONTINGENCY - 3%	\$112,757	\$5.65
BOND EXPENSE - 1.27%	\$49,716	\$2.49
TOTAL GMP BUDGET:	\$4,171,116	\$209.01

SUBMITTED BY:
CS CONSTRUCTION

MATT COHEN, LLC MANAGER

DATE

Next on the Phase II schedule

- Continue final design and VE evaluations.
- BBT complete 100% Construction Documents February 23rd.
- CS advertise for bid on February 25th with bid dates mid March.
- Second Week of March set new construction limits and building layout.

Ongoing Bond Project Process

- ES – Finalize Design advertise for Bid
- District scope refinement for Phase III with CS Construction and BBT
- District Safety Committee recommendations
- District Technology Committee recommendations